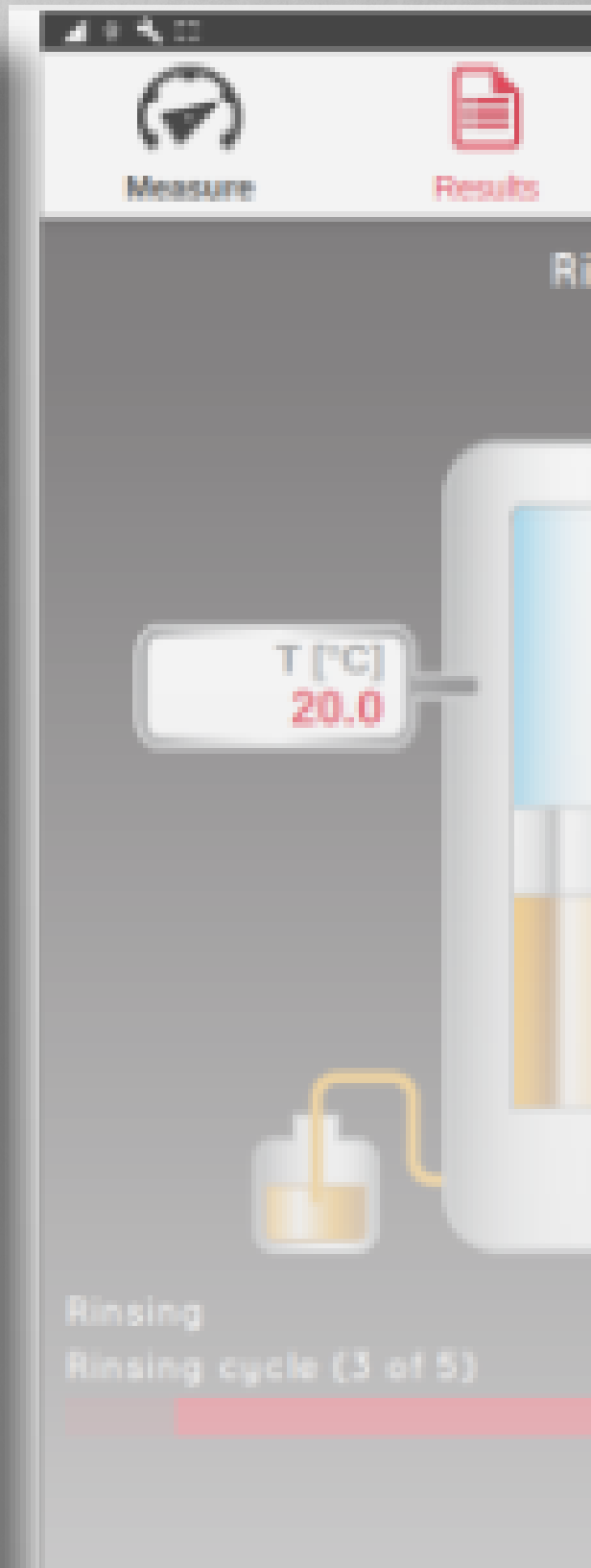
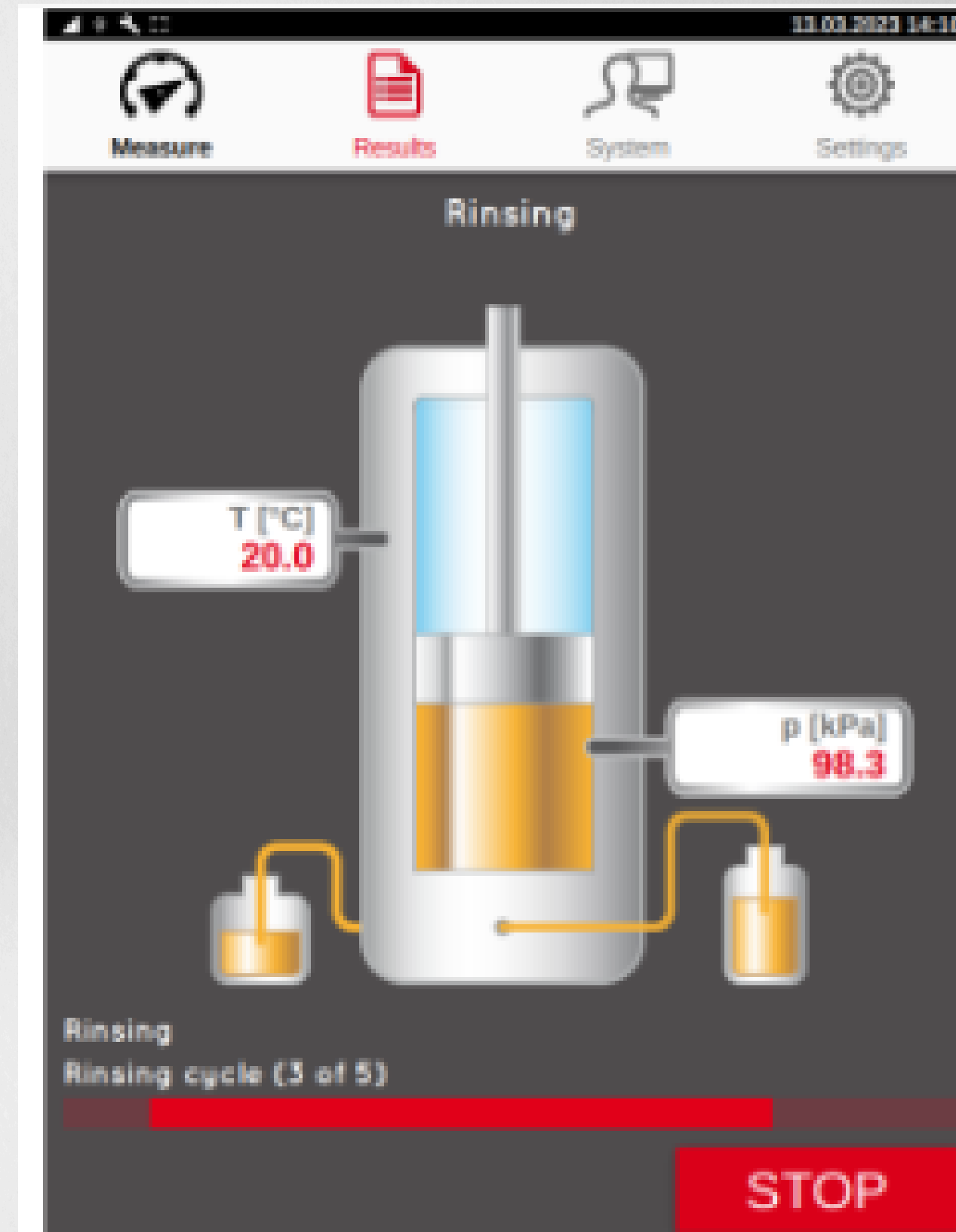


CLEANING TIPS

CRUDE OIL SAMPLES

RINSING THE MEASUREMENT CELL IS VERY IMPORTANT TO AVOID CROSS CONTAMINATIONS FROM THE PREVIOUS SAMPLE.





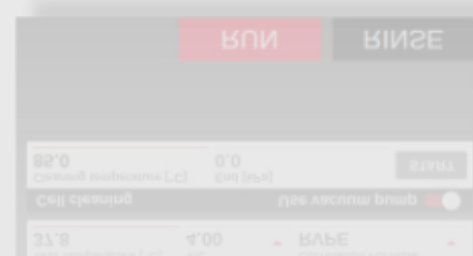
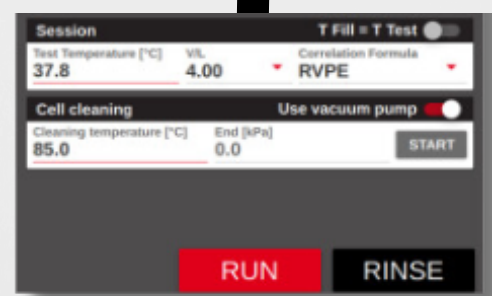
MANUAL RINSE

USE TOLUENE FOR TWO RINSES OF THE MEASUREMENT CELL



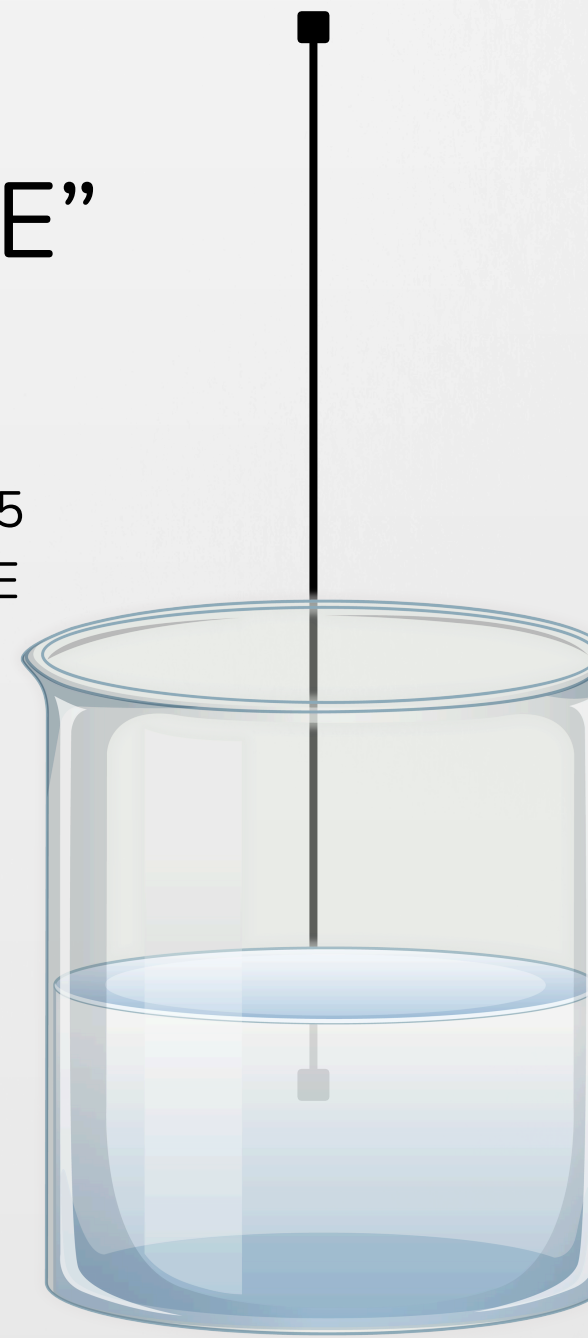
PRESS "RINSE" BUTTON

INITIATE TWO SETS OF 5 RINSING CYCLES IN THE "MEASURE" MENU



CHECK TOLUENE COLOR

IF TOLUENE COLOR REMAINS DARK, REPEAT RINSING.



FINAL TOLUENE RINSE

CONCLUDE WITH TWO AIR RINSES UNTIL TOLUENE IS NEARLY COLORLESS

